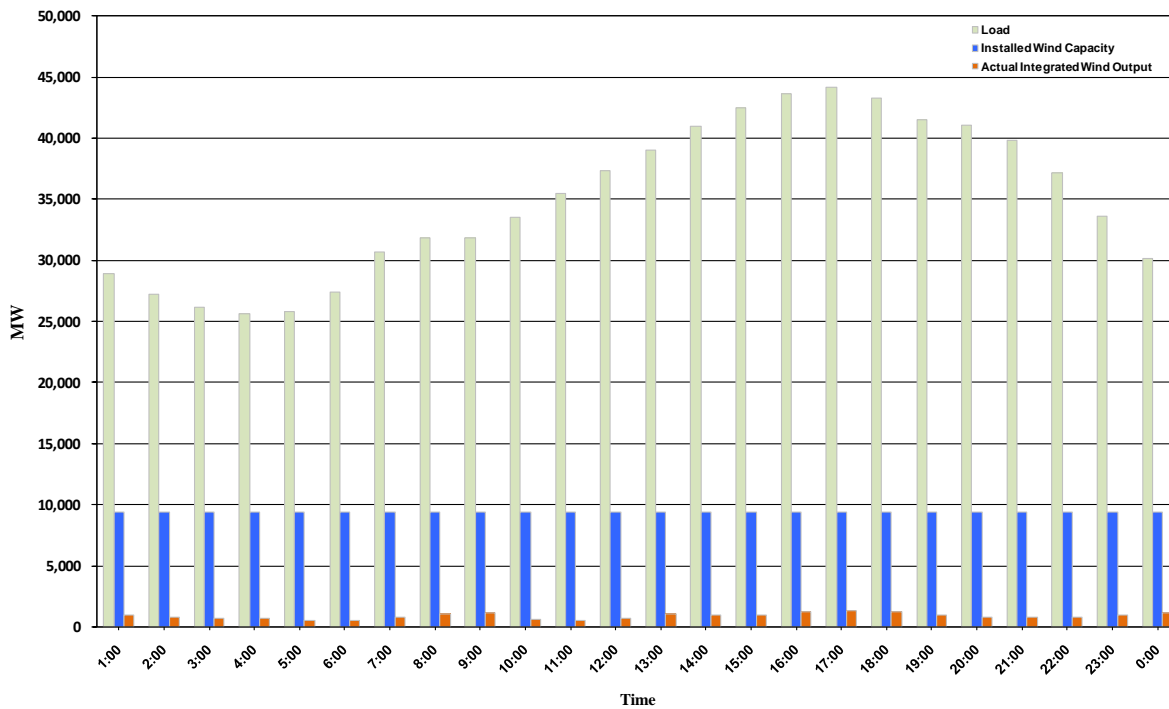




ERCOT Grid Operations Wind Integration Report: 10/12/10

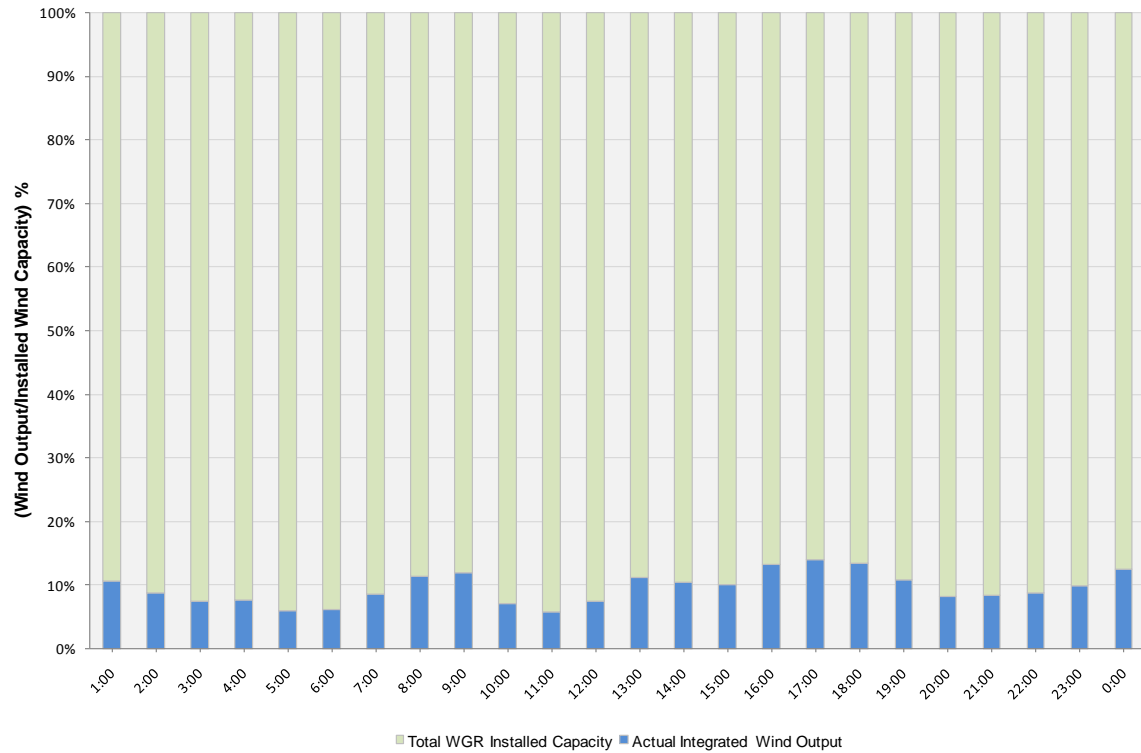
Peak Load	44,137 MW
Load Peak Hour	17
Wind Record 06/12/10	7016 MW
Max Wind value	1388 MW
Wind Peak Hour	16:03:16
Wind Integration %	3.15

Hourly Average Actual Load vs. Actual Wind Output
10-12-2010

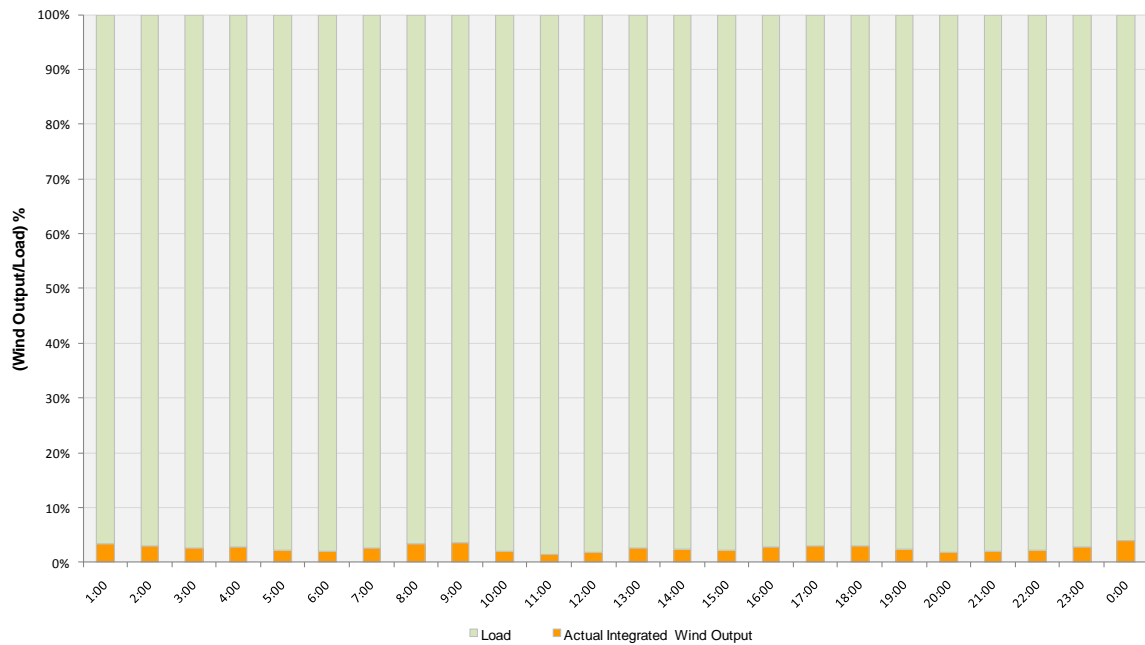




Actual Wind Output as a Percentage of the Total Installed Wind Capacity
10-12-2010



Actual Wind Output as a Percentage of the ERCOT Load
10-12-2010





ERCOT Load vs. Actual Wind Output 10/05/10 - 10/12/10

